

55/52

52

# A PART OF A P.U.D. CYPRESS BEND

A PLAT OF A PORTION OF SECTION I, TOWNSHIP 47 SOUTH, RANGE 41 EAST  
AND ALSO BEING A REPLAT OF PARCEL P OF LAKES AT BOCA RATON - PHASE III AS RECORDED IN  
PLAT BOOK 55, PAGES 1, 2 & 3  
OF THE PUBLIC RECORDS OF PALM BEACH COUNTY, FLORIDA  
PALM BEACH COUNTY, FLORIDA

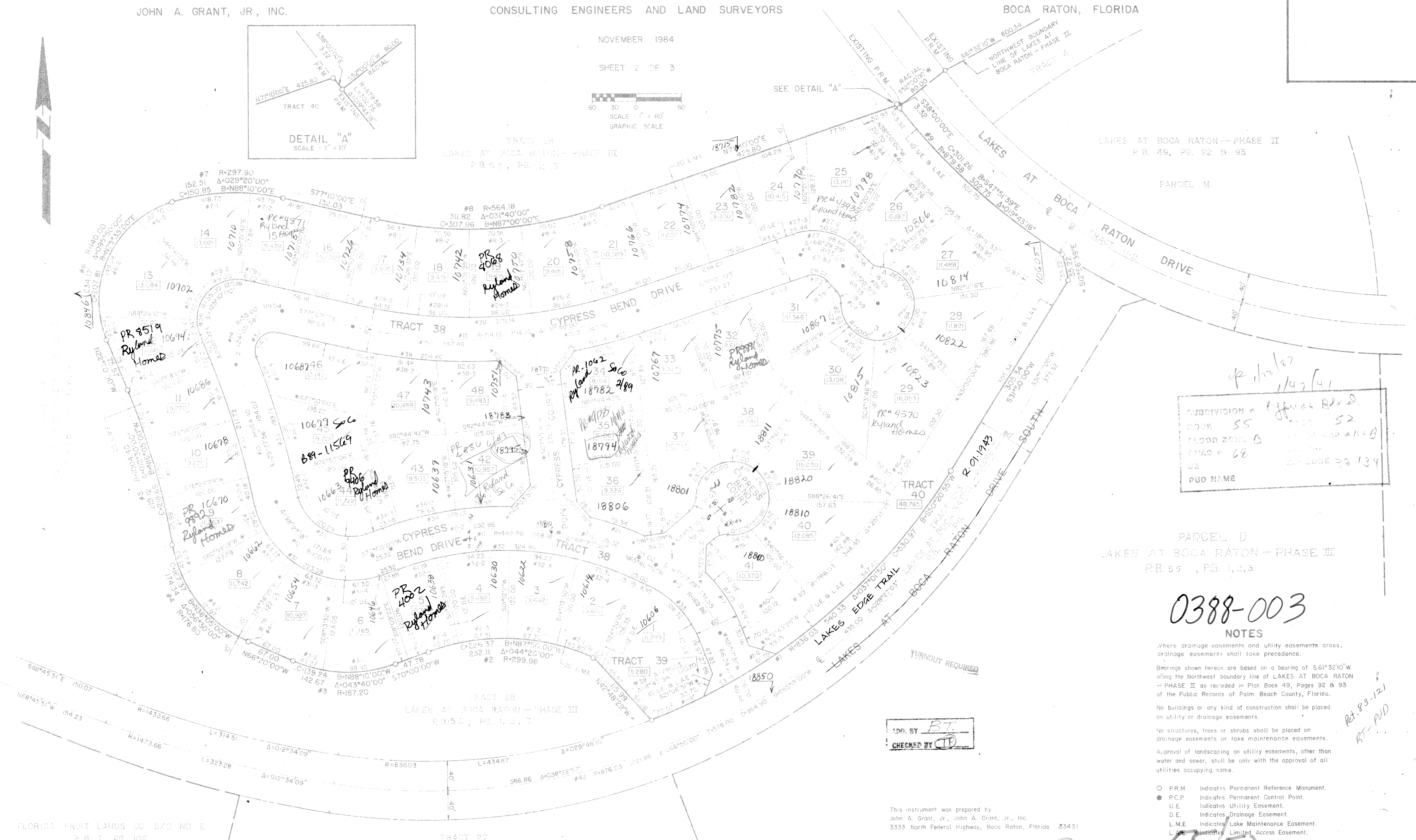
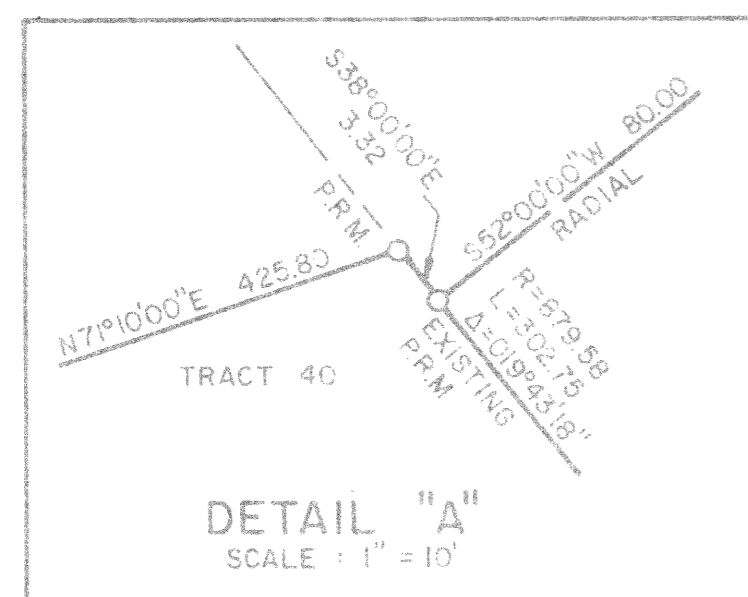
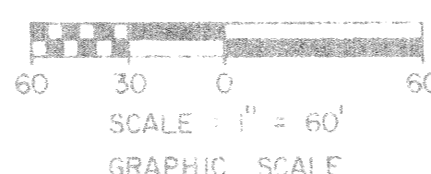
JOHN A. GRANT, JR., INC.

CONSULTING ENGINEERS AND LAND SURVEYORS

BOCA RATON, FLORIDA

NOVEMBER 1984

SHEET 2 OF 3



Subdivision = Cypress Bend  
Book 55 Page 52  
Record Zone B  
Map # 68  
PUD Name

PARCEL D  
LAKES AT BOCA RATON - PHASE III  
P.B. 55, Pgs. 1, 2, 3

## 0388-003

### NOTES

- Where drainage easements and utility easements cross, drainage easements shall take precedence.
- Bearings shown herein are based on a bearing of S61°32'10"W along the Northwest boundary line of LAKES AT BOCA RATON - PHASE II as recorded in Plat Book 49, Pages 92 & 93 of the Public Records of Palm Beach County, Florida.
- No buildings or any kind of construction shall be placed on utility or drainage easements.
- No structures, trees or shrubs shall be placed on drainage easements or lake maintenance easements.
- Approval of landscaping on utility easements, other than water and sewer, shall be only with the approval of all utilities occupying same.

- P.R.M. Indicates Permanent Reference Monument.
- P.C.P. Indicates Permanent Control Point.
- U.E. Indicates Utility Easement.
- D.E. Indicates Drainage Easement.
- L.M.E. Indicates Lake Maintenance Easement.
- L.A.E. Indicates Limited Access Easement.
- \* Indicates non-radial course.

PREPARED BY BT  
CHECKED BY TD

This instrument was prepared by  
John A. Grant, Jr., John A. Grant, Jr., Inc.  
3335 North Federal Highway, Boca Raton, Florida 33431.

# CYPRESS BEND

Ret. 83-121  
BT - PUD

DRAWING NUMBER

DRAWING NUMBER

DRAWING NUMBER

FLORIDA FRUIT LANDS CO. S/D NO 2  
P.B. 1, Pgs. 102

TRACT 27  
LAKES AT BOCA RATON - PHASE III  
P.B. 55, Pgs. 1, 2, 3